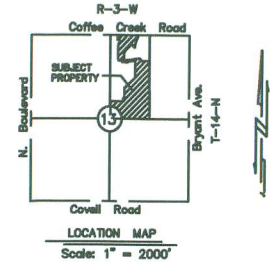




REDMONT TRACE

A Turner & Company Community

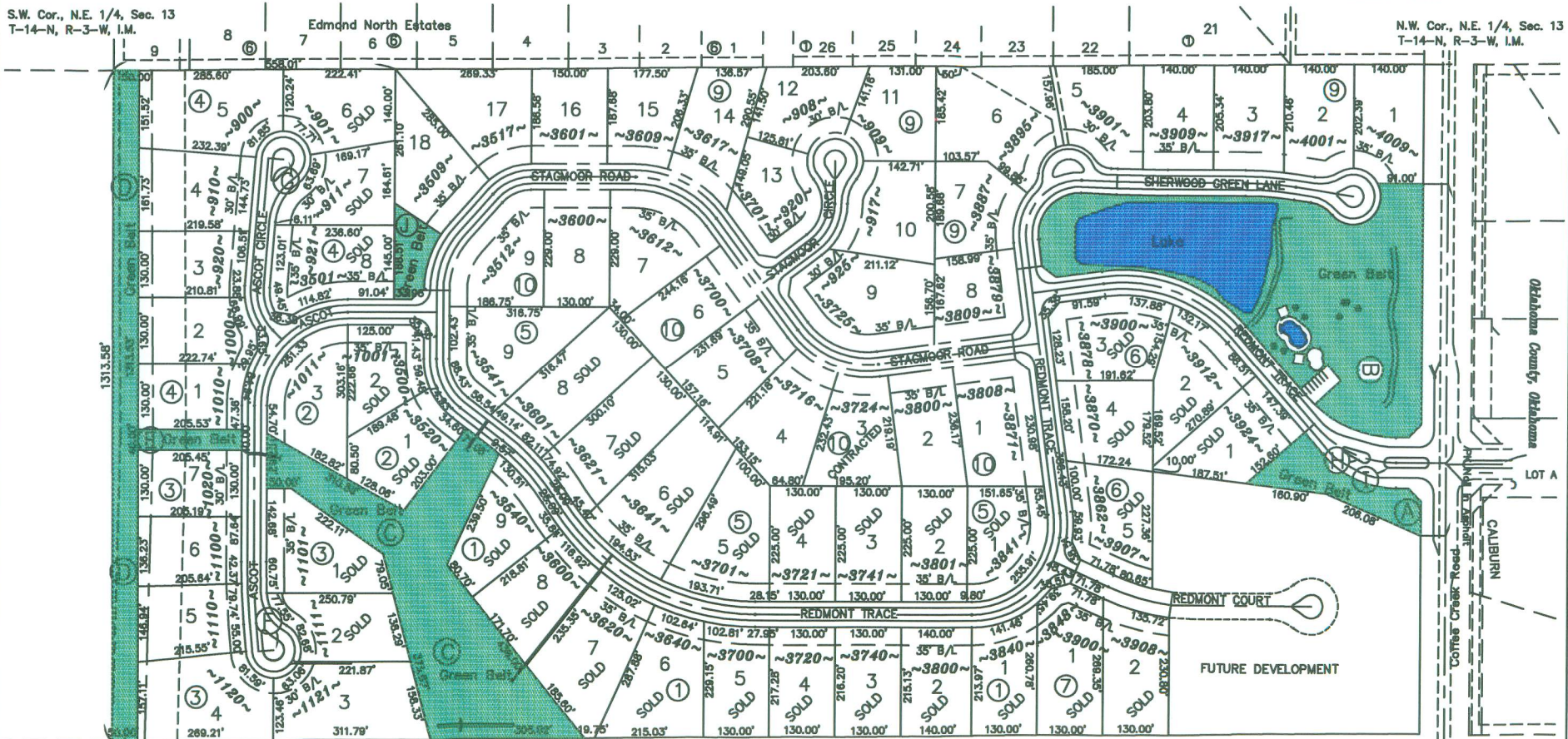
Scale: 1" = 100'



S.W. Cor., N.E. 1/4, Sec. 13
T-14-N, R-3-W, I.M.

Edmond North Estates

N.W. Cor., N.E. 1/4, Sec. 13
T-14-N, R-3-W, I.M.



Sales Plat Only
Verify All Lot Dimensions, Easements & Building Line Locations On Final Plat As Filed Of Record:
Redmont Trace I = 9/14/2001
Redmont Trace II = 3/5/2003

- Note: Minimum Building Setback Lines For This Project Are:
1. Front Yard - 35 Feet Except Lots 2 Through 7 Of Block 3 And Lots 1 Through 7 Of Block 4 Which Shall Have A 30 Foot Setback.
 2. Side Yard - 15 Feet
 3. Rear Yard - 25 Feet
- All Streets Are Private
 - ~1100~ = Street Address

For Lot Information:
Contact: Bob Turner
(405) 818-6264
www.turnercommunities.com



Sales Information as of September 12, 2005

SALES PLAT